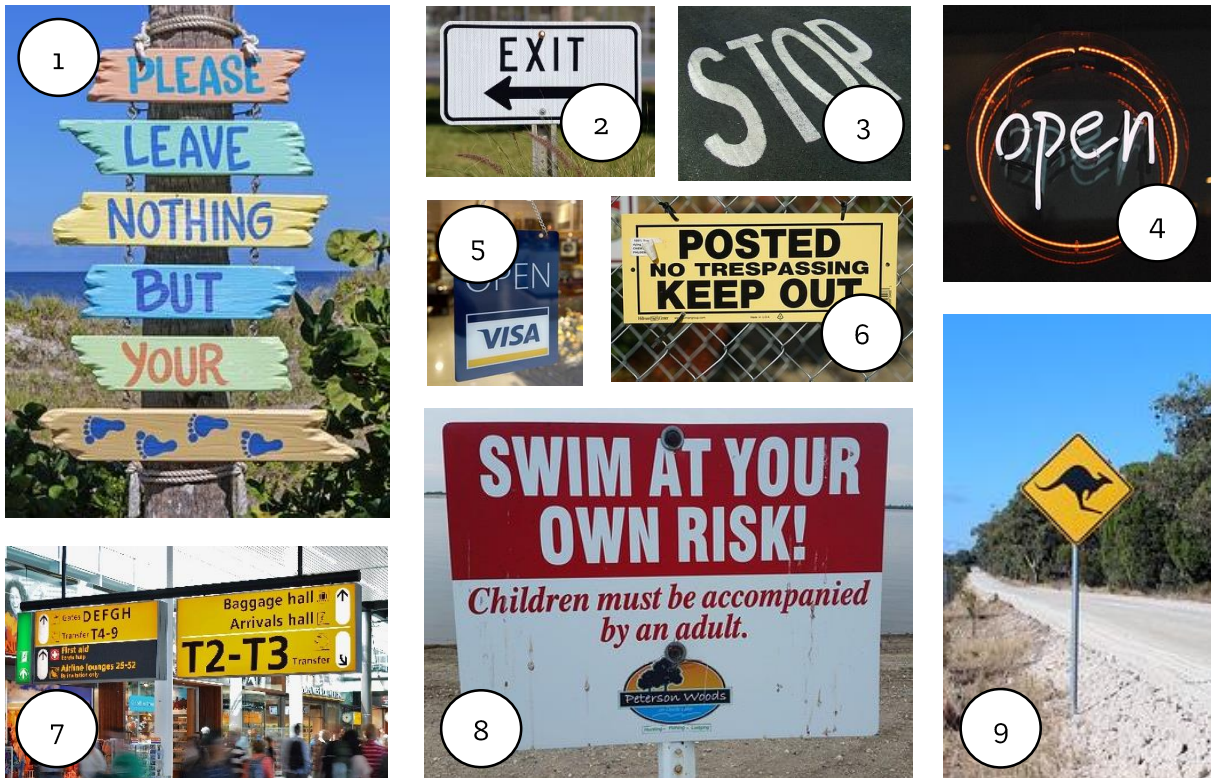


**Preliminary (PET) – Reading Part 1 – Signs and Modals of Obligation**

**A. Where would you see these signs?**



**B. Which signs do the following sentences relate to?**

1. The restaurant has started serving food, so you can take your table now.
2. If you need to collect your luggage, you should continue straight on.
3. Parents must be careful with their children while they are in the water.
4. This is private property and you can't enter without permission.
5. You don't have to pay by credit card if you don't want to. If you prefer, pay in cash.
6. Respect your surroundings. You shouldn't leave any rubbish on the beach.
7. When you leave the area, you have to follow the signs for the exit.
8. There's wildlife in the area, so you ought to be careful.
9. At a dangerous intersection you mustn't continue until you stop your vehicle.

**C. Put the underlined modal verbs of obligation into the correct category.**

Obligation	Prohibition	No obligation	Recommendation	Possibility
<i>must</i>				

D. Now look at these signs. What rules, regulations and recommendations do they tell you? Use the modal verbs to write sentences about them. Don't repeat the same verb twice!



1. -----
2. -----
3. -----
4. -----
5. -----
6. -----

E. These expressions of obligation are similar to the modal verbs. Speaking to a partner, rephrase your sentences from activity D with the expressions.

you are allowed to .....    ..... isn't permitted    you aren't allowed to .....    make sure you .....  
 ..... is obligatory    you are supposed to .....    ..... is necessary    ..... is prohibited

F. What are the rules, regulations and recommendations in these places? Do you think they are different in other countries? Discuss with a partner.

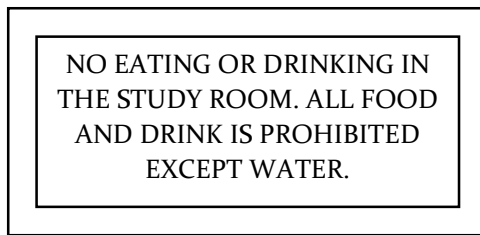
- A restaurant
- A public swimming pool
- The airport
- Riding a bike
- A primary school class
- The beach

- On a bus
- On the road
- Playing football
- A library
- A church/mosque/temple
- In your house



G. Complete the PET Reading Part 1 task. Look at the text in each question. What does it say? Mark the correct letter A, B or C.

1.



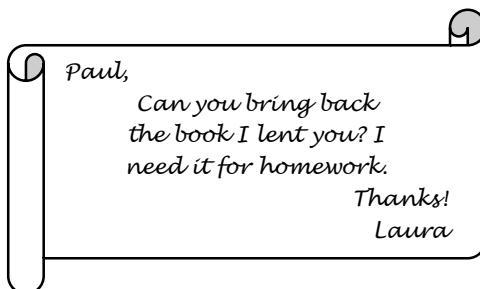
- A. Students mustn't bring anything into the study room with them.
- B. The only thing you are allowed to take into the study room is water.
- C. If you drink water in the study room, you will be asked to leave.

2.



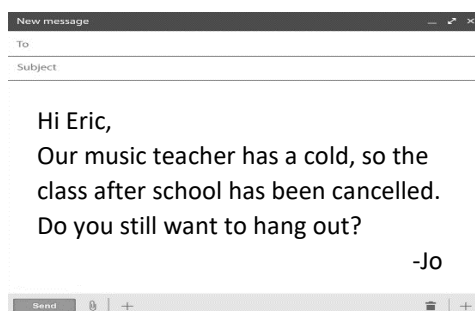
- A. You can't use the swimming pool at the moment.
- B. The swimming pool is only open to the public in the spring.
- C. You need special permission to use the swimming pool.

3.



- A. Paul is going to give his book to Laura to do her homework.
- B. Laura doesn't have to use the book for her homework.
- C. Paul has Laura's book, but she needs it back.

4.



- A. Eric isn't allowed to go to music class this afternoon.
- B. Eric and Jo don't have to go to music class this afternoon.
- C. Jo wants to hang out with Eric after music class this afternoon.

5.



- A. Sarah ought to go to the doctor this morning.
- B. Sarah must be ready to meet her parents after class.
- C. Sarah has to ask Janet something during dinner.

**ANSWER KEY**

A.

1. Beach
2. Car park
3. Street
4. Restaurant
5. Shop
6. Building site, private property
7. Airport
8. Swimming pool
9. Road in Australia

B.

1. 4
2. 7
3. 8
4. 6
5. 5
6. 1
7. 2
8. 9
9. 3

C.

Obligation	Prohibition	No obligation	Recommendation	Possibility
<i>must</i> <i>have to</i>	<i>mustn't</i> <i>can't</i>	<i>don't have to</i>	<i>should</i> <i>shouldn't</i> <i>ought to</i>	<i>can</i>

D. Answers will vary

E. Answers will vary

F. Answers will vary

G.

1. B
2. A
3. C
4. B
5. B